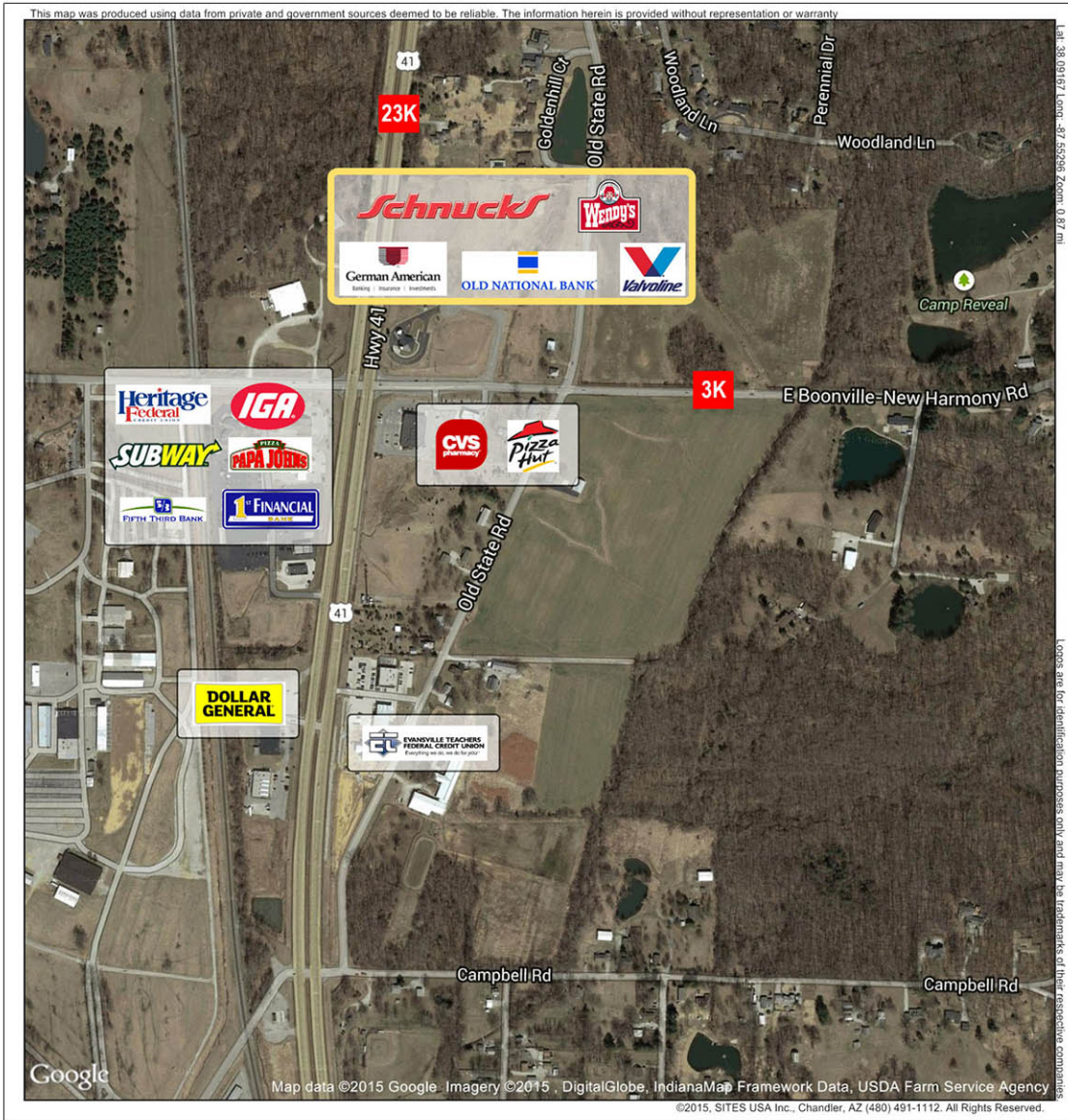


# D A R M S T A D T C R O S S I N G

6 0 0 B o o n v i l l e - N e w H a r m o n y R d - E v a n s v i l l e , I N 4 7 7 2 5



## PROPERTY HIGHLIGHTS

- New **Schnucks** location now open. Schnucks is the dominant grocery retailer in Evansville with 6 supermarket locations
- Affluent, high-growth trade area - average household incomes of \$96,176 within 3 miles of the property
- Shopping center is now 100% leased and most outlots have been sold or are under contract

## PROPERTY DETAILS

- Center Size: 73,472 sf
- Available Suites: 100% LEASED

Demographics	3 mile	5 mile	7 mile
Population	13,998	33,728	64,804
Population Growth ('00-'16)	56%	31%	20%
Avg HH Income	\$96,176	\$92,813	\$76,739



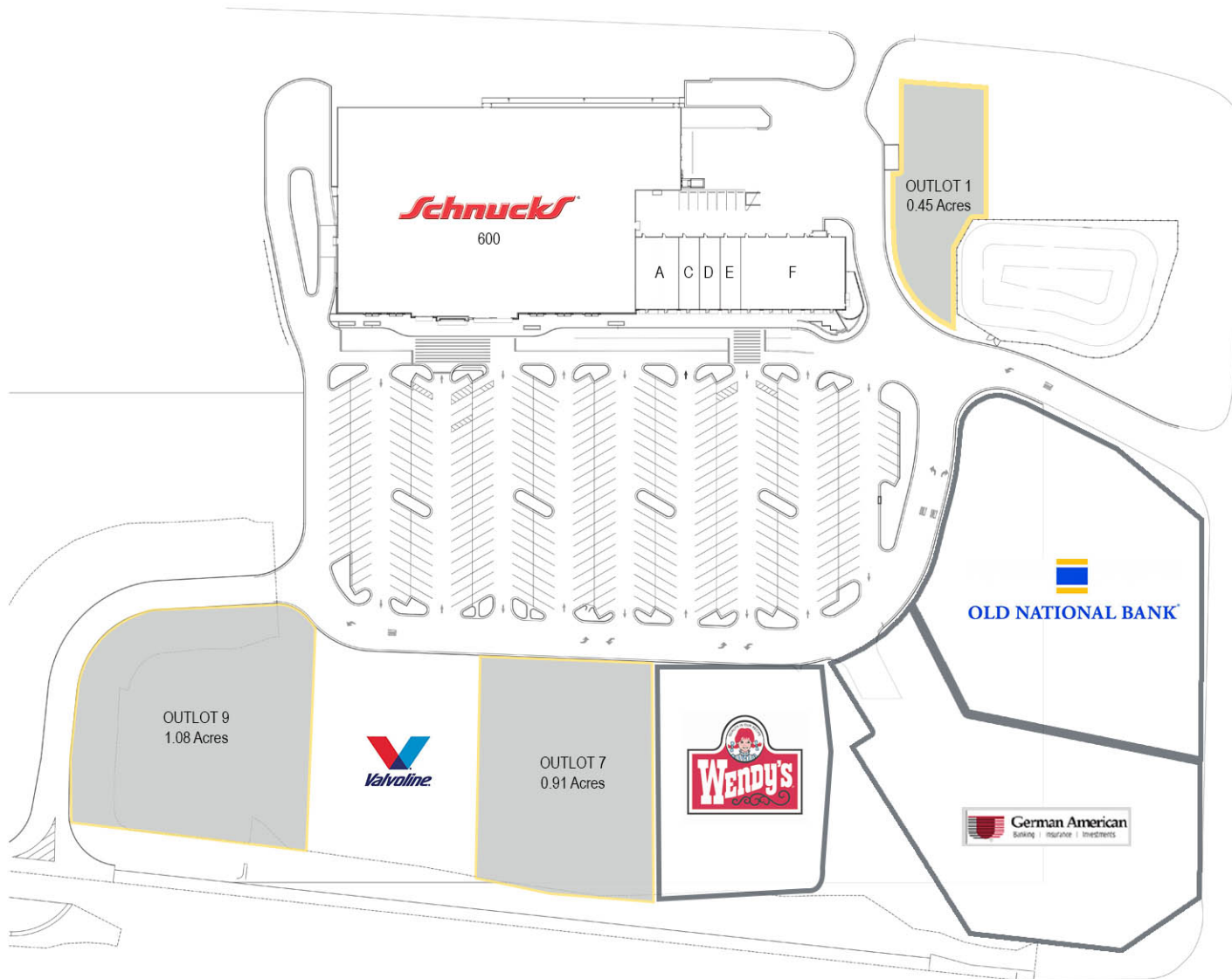
Ty Thornhill 314.994.4967 tthornhill@descogroup.com

25 N Brentwood Blvd  
St. Louis, MO 63105  
314.994.4444  
descogroup.com

The  
**DESCO**  
Group

# D A R M S T A D T C R O S S I N G

6 0 0 B o o n v i l l e - N e w H a r m o n y R d - E v a n s v i l l e , I N 4 7 7 2 5



**CENTER SIZE 73,472 SF**

**AVAILABLE SPACE**

**100% LEASED**

**AVAILABLE OUTLOTS**

Outlot 1	0.45 ac	Outlot 7	0.91 ac
Outlot 9	1.08 ac		

**CURRENT RETAILERS**

600	Schnucks	59,472 sf
600A	Premiere Tan	2,800 sf
600C	Bebe Nail & Spa	1,400 sf
600D	Philly Grill	1,400 sf
600E	Image Hair Salon	1,400 sf
600F	Hacienda	7,000 sf
Outlot 2	Old National Bank	0 sf
Outlot 3	German American Bank	0 sf
Outlot 5	Wendy's	0 sf

Ty Thornhill 314.994.4967 tthornhill@descogroup.com

25 N Brentwood Blvd  
 St. Louis, MO 63105  
 314.994.4444  
 descogroup.com

