

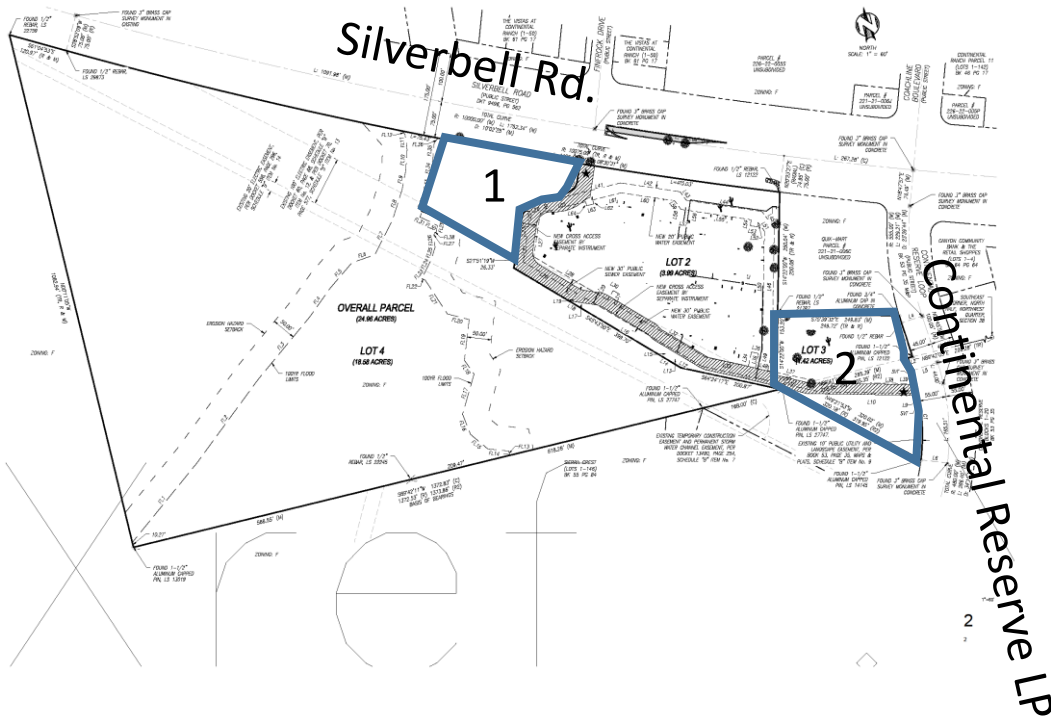
8705 N. Silverbell Road
8611 N. Continental Reserve LP
FOR SALE



Lot 1 ± .96 and Lot 2 +/- 1.43 Acres Land

For more information, please contact:
Patrick Welchert, SIOR
Cell: (520) 360-9394
pwelchert@alphacommercial.net

Parcel plan



Lot 1 = 8693 N Silverbell Rd.
Lot 2 = 8611 N. Continental Reserve Loop

8705 N. Silverbell Road
8611 N. Continental Reserve LP
FOR SALE



ALPHA COMMERCIAL
 REAL ESTATE SERVICE LLC

For more information, please contact:
 Patrick Welchert, SIOR
 Cell: (520) 360-9394
pwelchert@alphacommercial.net

Lot 1 ± .96 and Lot 2 +/- 1.43 Acres Land

