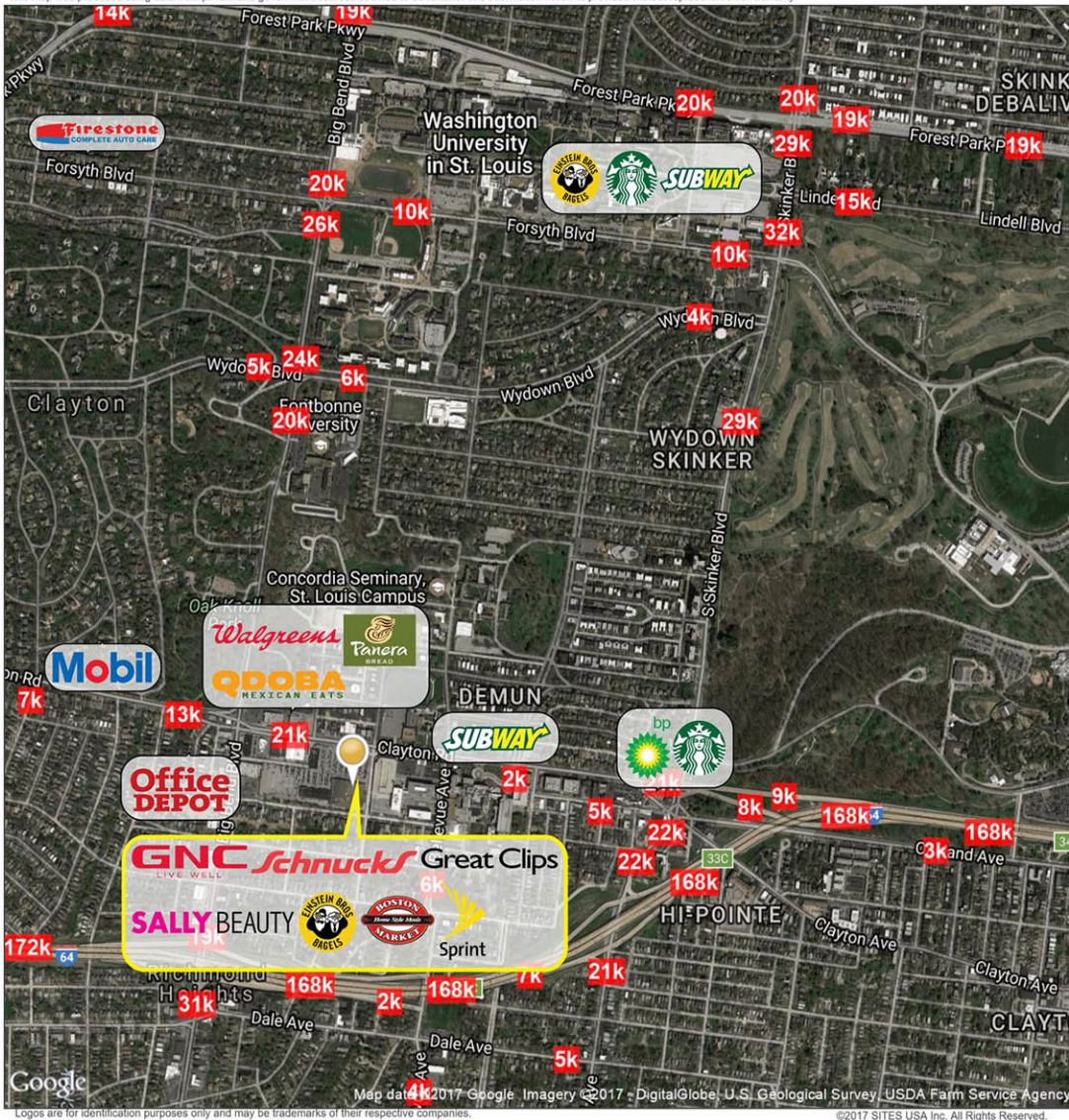


RICHMOND CENTER

6600 Clayton Rd - Richmond Heights, MO 63117

This map was produced using data from private and government sources deemed to be reliable. The information herein is provided without representation or warranty.



PROPERTY HIGHLIGHTS

- Anchored by **Schnucks**, the Midwest's premier grocery retailer
- Excellent mix of national and regional businesses which drive consumer traffic
- Close proximity to three universities and a major hospital campus

PROPERTY DETAILS

- Center Size: 97,747 sf
- Available Suites: 6650 - 1,994 sf

Demographics	1 mile	3 mile	5 mile
Population	19,351	133,756	348,784
Avg HH Income	\$87,487	\$75,359	\$65,288



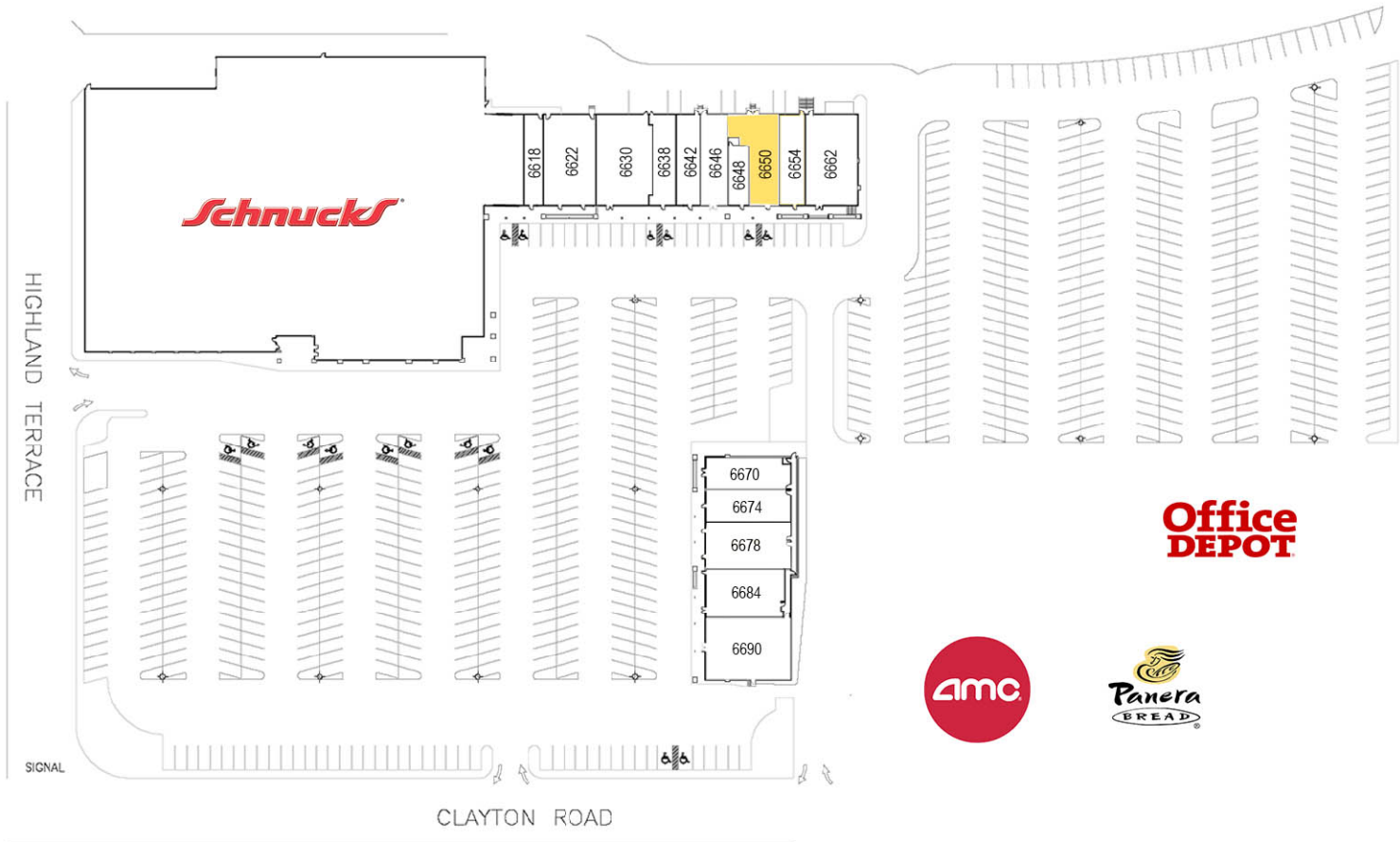
Kelly Long 314.994.4967 klong@descogroup.com

25 N Brentwood Blvd
St. Louis, MO 63105
314.994.4444
descogroup.com

The
DESCO
Group

RICHMOND CENTER

6600 Clayton Rd - Richmond Heights, MO 63117



CENTER SIZE 97,747 SF

AVAILABLE SPACE

6650 1,994 sf

CURRENT RETAILERS

6600	Schnucks	68,706 sf
6618	Great Clips	1,057 sf
6622	Sprint	2,800 sf
6630	Bikram Yoga	3,000 sf
6638	GNC	1,175 sf
6642	The UPS Stpre	1,374 sf
6646	Bank of America	1,400 sf
6648	Nail Spa	806 sf
6654	OR Juice and Smoothie	1,381 sf
6662	Duffy's	2,800 sf
6670	Sally Beauty	1,605 sf
6674	Hair Saloon	1,650 sf
6678	Banfield Pet Hospital	2,310 sf
6684	Einstein Bros. Bagels	2,409 sf
6690	Chase Bank	3,280 sf

Kelly Long 314.994.4967 klong@descogroup.com

25 N Brentwood Blvd
St. Louis, MO 63105
314.994.4444
descogroup.com

The
DESCO
Group